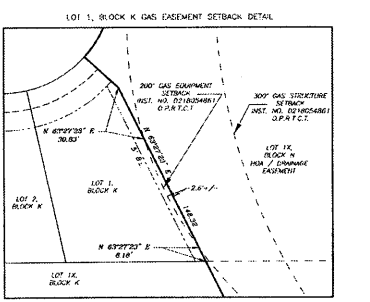


- LEGEND**
- UE = UTILITY EASEMENT
 - BL = BUILDING LINE
 - DE = DRAINAGE EASEMENT
 - CM = CONTROL MONUMENT
 - IRF = 3/8-INCH IRON ROD FOUND (UNLESS OTHERWISE NOTED)
 - IRS = 5/8-INCH IRON ROD SET WITH PLASTIC CAP STAMPED "SHIELD ENGINEERING"
 - D.R.T.C.T. = DEED RECORDS, TARRANT COUNTY, TEXAS
 - O.P.R.T.C.T. = OFFICIAL PUBLIC RECORDS, TARRANT COUNTY, TEXAS
 - P.R.T.C.T. = PLAT RECORDS, TARRANT COUNTY, TEXAS

NOTE: FRONT BUILDING SET BACKS TO BE 20' BASED ON CITY OF FORT WORTH APPROVED PRELIMINARY PLAT PP-015-065.



FINAL PLAT
OF
SOUTHFORK ESTATES
LOTS 27-51, BLOCK H; LOTS 2-26 AND 44-51, BLOCK J; LOTS 6-16, BLOCK K; LOTS 1-16 & 1X, BLOCK L; AND LOTS 8-13, BLOCK M
AN ADDITION TO
TARRANT COUNTY, TEXAS
BEING 15.628 ACRES OF LAND
SITUATED IN THE ANTONIO FERNANDEZ SURVEY,
ABSTRACT NO. 506,
TARRANT COUNTY, TEXAS



LINE TABLE		CURVE TABLE	
LINE #	BEARING	LENGTH	CHORD BEARING
L1	S44°41'17" W	14.14	S44°41'17" W
L2	N42°11'17" E	14.14	N42°11'17" E
L3	S44°41'17" W	14.14	S44°41'17" W
L4	N44°57'18" E	14.08	N44°57'18" E
L5	S47°12'10" W	14.41	S47°12'10" W
L6	S47°12'10" W	14.40	S47°12'10" W
L7	N44°57'18" E	14.08	N44°57'18" E
L8	N44°57'18" E	14.08	N44°57'18" E
L9	N44°57'18" E	14.08	N44°57'18" E
L10	N44°57'18" E	14.08	N44°57'18" E

COMMISSIONERS COURT
TARRANT COUNTY, TEXAS
PLAT APPROVAL DATE: **April 26, 2020**
BY: **April 26, 2020**
C.O.#13340

FORT WORTH
CITY PLAT COMMISSIONER
CITY OF FORT WORTH, TEXAS
PLAT APPROVAL DATE: **April 17, 2020**
BY: **April 17, 2020**
C.O.#13340

PLAT RECORDED IN TARRANT COUNTY CLERK'S
INSTRUMENT NO. _____
DATE: _____

TAPE FIRM #F-11039 - TPLS FIRM #10193890
1600 West 7th Street, Suite 200, Fort Worth, TX 76102 - 817.810.0696