

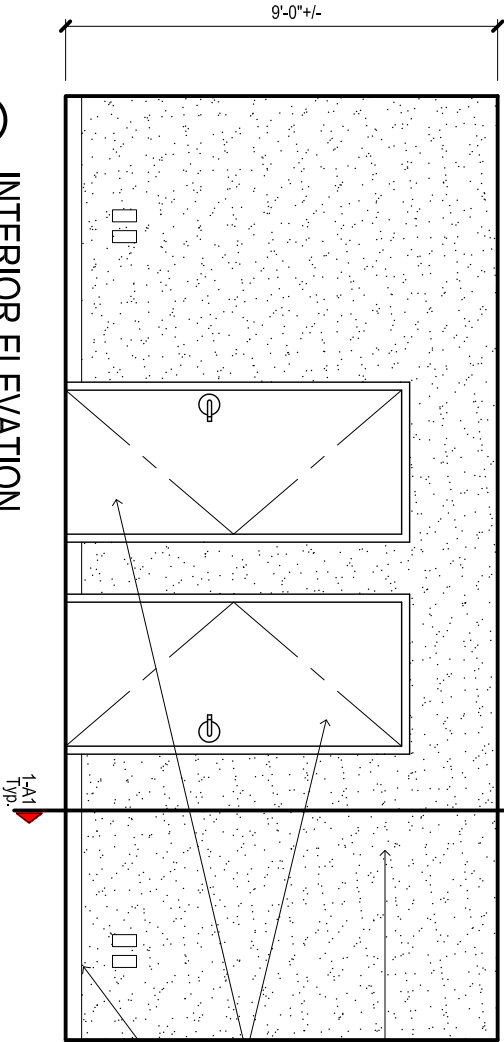
1 WALL SECTION (TYP.)

SCALE: 3/8"=1'-0"

FLOOR PLAN

154 s.f. net  
166 s.f. net

SCALE: 1/8"=1'-0"

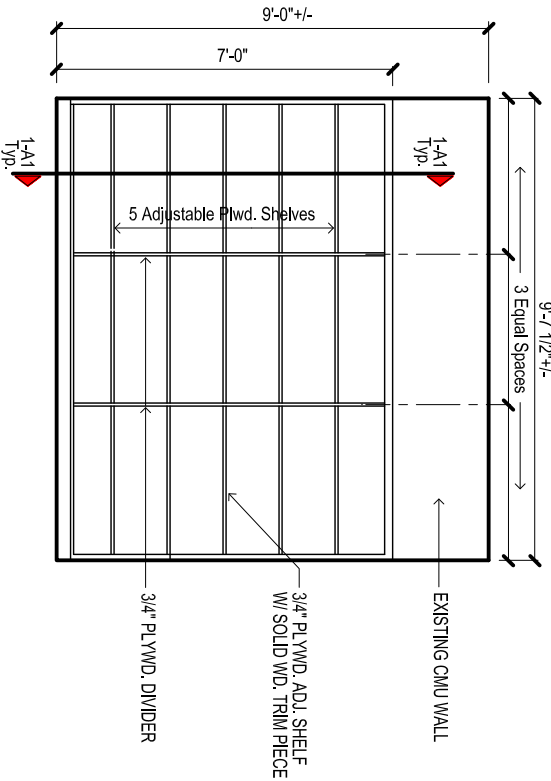


2 INTERIOR ELEVATION

SCALE: 1/4"=1'-0"

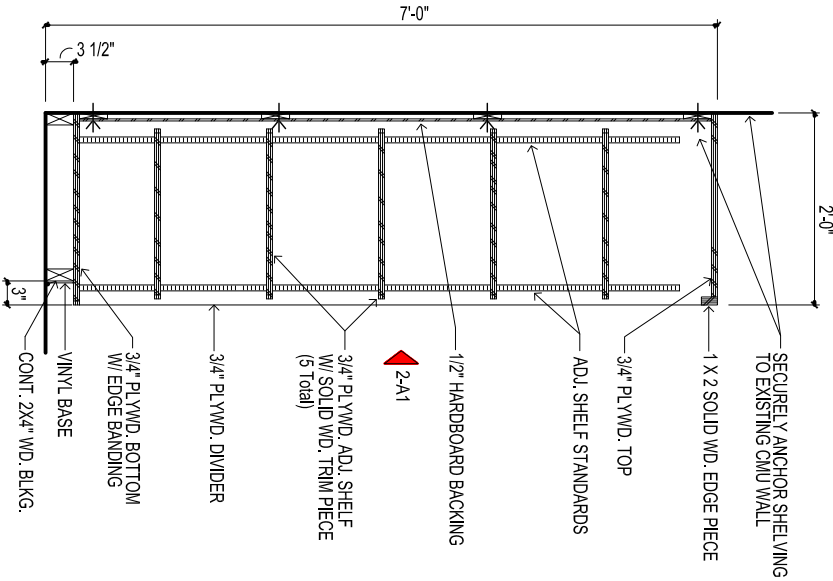
REFLECTED CEILING PLAN

SCALE: 1/8"=1'-0"



3 SHELVING ELEVATION

SCALE: 1/4"=1'-0"



4 WALL SHELVING SECTION

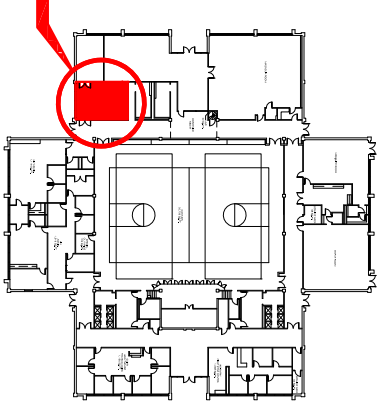
SCALE: 1/2"=1'-0"

PRELIMINARY DRAWING FOR REVIEW ONLY;  
NOT FOR CONSTRUCTION PURPOSES

LOCATION PLAN



RESOURCE CONNECTION  
2300 CIRCLE DRIVE  
FORT WORTH, TEXAS 76119



Tarrant County - Facilities Management  
Construction Services  
100 W. Weatherford St. Room 350  
Fort Worth, Texas 76196  
p: (817) 884-1502

NEW STORAGE ROOMS FOR  
RESOURCE CONNECTION  
2300 CIRCLE DRIVE  
FLOOR PLAN, REFLECTED CEILING PLAN, ELEVATION, LOCATION PLAN

DRAWING NUMBER  
2300 RESOURCE CONNECTION  
DATE: October 21, 2022  
DRAWN BY: H.C.  
SHEET NO.  
A-1  
1 OF 1 SHEETS